



中科瑞泰（北京）生物科技有限公司
Tel: 400-699-0631
[http:// www.real-tims.com.cn](http://www.real-tims.com.cn)
E-mail: real-times@vip.163.com

Cat No: RGC2080

PsbC | Anti-CP43 subunit of Photosystem II

Product information

Immunogen	KLH-conjugated synthetic peptide chosen from known sequences of PsbC including Arabidopsis thaliana PsbC UniProt: P56778, TAIR: AtG00280
Host	Rabbit
Clonality	Polyclonal
Purity	Immunogen affinity purified
Format	Solution
Quantity	20 µl
Storage	Store at -20° C; make aliquots to avoid repeated freeze-thaw cycles. Please, remember to spin tubes briefly prior to opening them to avoid any losses that might occur from material adhering to the cap or sides of the tubes.

Additional information | Contains 0.01% ProClin

Application information

Recommended dilution | 1:3 000-1:5000 (WB)

Expected | apparent
MW | 45 | 43 kDa

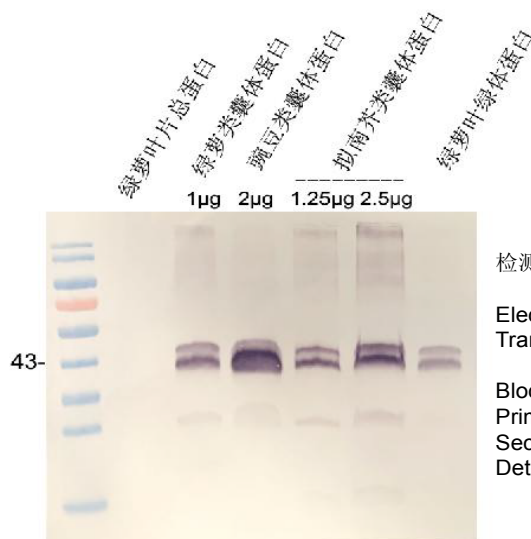
Confirmed reactivity | Arabidopsis thaliana, Chlamydomonas reinhardtii, Chlorella sorokiniana, Chromochloris zofingiensis, Echinochloa crus-galli, Hordeum vulgare, Oryza sativa, Panax ginseng, Physcomitrella patens, Pisum sativum, Phaseolus vulgaris, Pyropia yezoensis, Synochococcus sp. PCC7002, Synechocystis sp. PCC6803, Triticum aestivum, Triticeae, Zea mays, Verbascum lychnitis, Vigna radiata

Predicted reactivity | Asimina parviflora, Borago officinalis, Cannabis sativa, Carthamus persicus, Casimirella guaranitica, Calatola mollis, Citron x limon, Cunninghamia lanceolata, Deeringothamnus rugelii, Gonystylus bancanus, Leretia cordata, Lobatiriccardia lobata, Myricaria germanica, Natsiatum herpeticum, Nothapodytes montana, Nerium oleander, Ottoschulzia rhodoxylon, Oxandra lanceolata, Solanum tuberosum, Oryza sativa, Panax quinquefolius, Prosopidastrum angusticarpum, Prosopis glandulosa, Rollinia mucosa, Rosmarinus officinalis, Saxifraga rivularis, Spinacia oleracea, Zelkova serrata, Vachellia caven, Vitis vinifera, Zosteria marina, Xerocladia viridiramis

Not reactive in | diatoms

Additional information | In C4 plants like Zea mays antibody detects 2 bands.

Application Example



检测到两个条带，大小43和45kD

Electrophoresis: 10% RealPAGE SDS Electrophoresis(RTD6148)
Transfer: 1×RealBlot transfer buffer(RT5020)
350mA blotting to NC membrane for 30min.
Blocking: BSA at RT for 1h.
Primary antibody: PsbC 1:5000 dilution at RT for 1h
Secondary antibody: 1:5000 dilution using Goat Anti-Rabbit IgG AP
Detection: using BCIP/NBT at RT for 5 min